



Premier Health

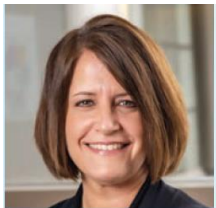
EMS Center of Excellence

Topic: *Trauma Annual Report*

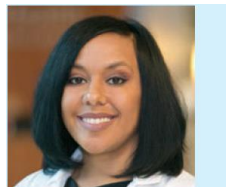
Presented by:

Premier Health Emergency & Trauma Institute

Trauma Program Managers



Ann Monnig, MSN, RN
Trauma Program Manager



Alexandra Carpenter, MHA,
BSN, RN, TCRN, CPEN
Trauma Program Manager



Beth Larsen, MSN, RN
Trauma Program Manager



Tracy Knox, BSN, RN
Trauma Program Manager

Watch Live: **Wednesday, May 27th at 9AM**

This lecture will be available to you wherever you have access to the internet. During the live event, you will be able to text questions through our video platform. The lecture will be recorded and available soon afterwards in case you are unable to attend or are pulled away. To receive free **Continuing Education** credit, go to the link shown at the end of the lecture.

ONLY if you have **NOT ATTENDED ANY** of our distance learning classes, please register using the link below:



<https://tinyurl.com/Premier-EMS-Signup>

If you have any **questions**, please contact either EMS Coordinator:

Joe Burdick jdburdick@premierhealth.com

or Elizabeth Beam ejbeam@premierhealth.com