

ARE YOU READY FOR QUARTERLY TRIAGE DAY?

OUR NEXT QTD IS
JUNE 13TH AT 8:00 PM
THROUGH
JUNE 14TH AT 8:00 PM!

Ribbons

Put a Triage Ribbon on every patient for 24 hours!
Use ribbon based on condition, severity, and SALT

Radios

8:00PM - Midnight on 7/13

and

8:00 AM - Noon on 7/14:

- *Hospitals:* monitor MCI Radios
- *EMS crews:* make MCI-style reports over MCI radio talk groups

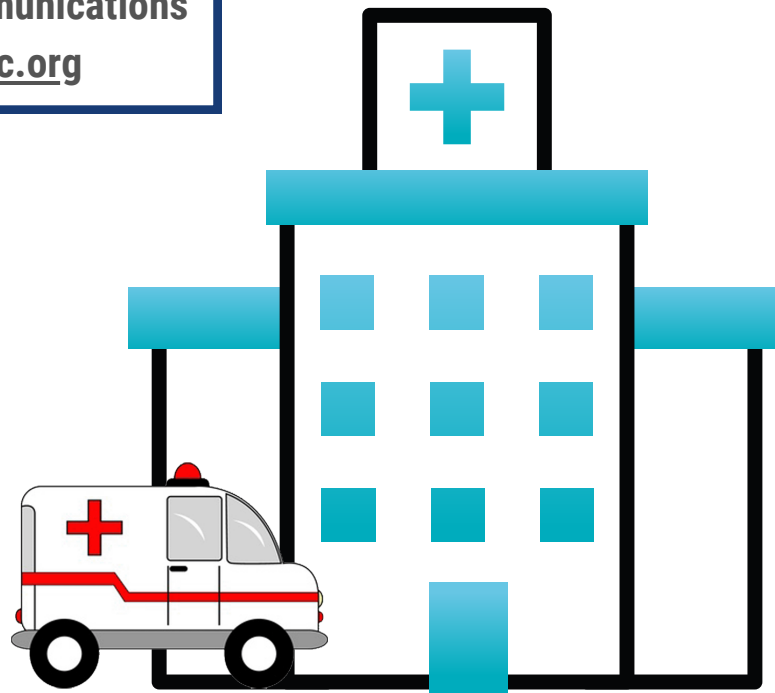
Reviews

FREE CONTINUING EDUCATION!

Use the free training materials on MCIs, SALT triage, and MCI communications trainings at gmvemsc.org

GET THE WORD OUT!

After participation, fill out this feedback form!



QTD drills help our region better prepare for all types of MCIs.